

Housing and HIV-Related Health Care Outcomes Among HRSA's Ryan White HIV/AIDS Program (RWHAP) Clients in 2019*



Several priority populations experience disproportionately high rates of temporary or unstable housing.



Youth (13–24 years old)



People who inject drugs**



Transgender people

Temporary

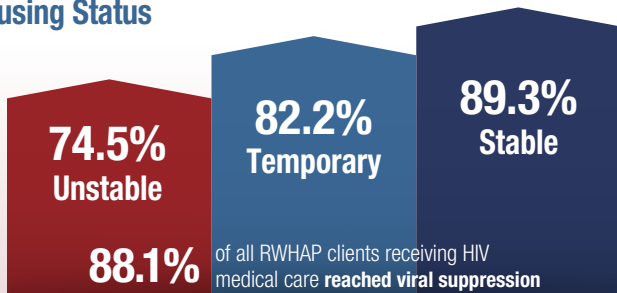


Unstable



**Clients who reported injection drug use as their transmission category

HIV Viral Suppression Among RWHAP Clients By Housing Status



*Source: Ryan White HIV/AIDS Program Annual Client-Level Data Report 2019. <https://hab.hrsa.gov/data/data-reports>. Published January 2021.