

Native Hawaiian/ Pacific Islander Clients:

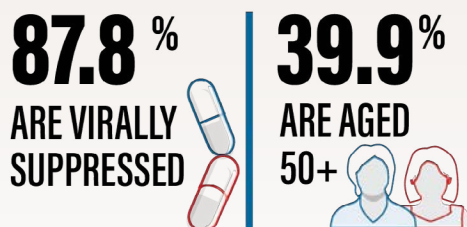
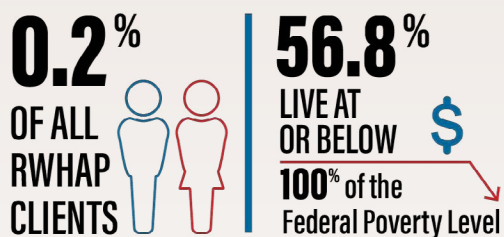
HRSA's Ryan White HIV/AIDS Program, 2021



Population Fact Sheet | March 2023

The Health Resources and Services Administration's Ryan White HIV/AIDS Program (RWHAP) provides a comprehensive system of HIV primary medical care, medications, and essential support services for low-income people with HIV. More than half the people with diagnosed HIV in the United States—more than 576,000 people in 2021—receive services through RWHAP each year. The RWHAP funds grants to states, cities, counties, and local community-based organizations to provide care and treatment services to people with HIV to improve health outcomes and reduce HIV transmission. For more than three decades, RWHAP has worked to stop HIV stigma and reduce health disparities by caring for the whole person and addressing their social determinants of health.

Ryan White HIV/AIDS Program Fast Facts: Native Hawaiian/Pacific Islander Clients



Of the more than half a million clients served by RWHAP, 73.3 percent are people from racial and ethnic minorities; nearly 1,200 clients (0.2 percent) are Native Hawaiian/Pacific Islander (NH/PI) people.

Learn more about NH/PI clients served by RWHAP:

- **The majority of NH/PI clients served by RWHAP are male.** Data show that 74.2 percent of NH/PI RWHAP clients are male, 18.7 percent are female, and 7.1 percent are transgender.
- **The majority of NH/PI clients served by RWHAP are people with lower incomes.** Data show that 56.8 percent of NH/PI clients live at or below 100 percent of the federal poverty level, which is lower than the national RWHAP average (59.2 percent).
- **Data show that 6.8 percent of NH/PI clients served by RWHAP experience unstable housing.** This percentage is higher than the national RWHAP average (5.0 percent).
- **NH/PI RWHAP clients are aging.** NH/PI clients aged 50 years and older account for 39.9 percent of all NH/PI RWHAP clients, which is lower than the national RWHAP average (48.3 percent).
- **Among NH/PI RWHAP male clients, 78.4 percent are men who have sex with men (MSM).** This percentage is higher than the national RWHAP average of MSM clients (67.4 percent of all male clients).

Medical care and treatment improve health outcomes and decrease the risk of HIV transmission. People with HIV who take HIV medication as prescribed and reach and maintain viral suppression cannot sexually transmit the virus to their partner. According to 2021 data, 87.8 percent of NH/PI clients receiving RWHAP HIV medical care are virally suppressed,* which is slightly lower than the national RWHAP average (89.7 percent).

* Viral suppression is defined as a viral load result of less than 200 copies/mL at the most recent test, among people with HIV who had at least one outpatient ambulatory health services visit and one viral load test during the measurement year.